

Strategic Directions

2019-2023



**CATHOLIC
EDUCATION**

COMMISSION OF
WESTERN AUSTRALIA





Foreword

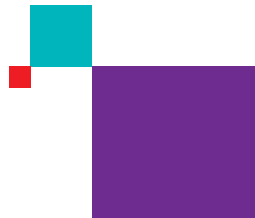
Chair, Catholic Education Commission of Western Australia

I am pleased to introduce you to the *Strategic Directions 2019-2023* for the Catholic Education Commission of Western Australia (CECWA). The document sets out the four key priorities for our system. The CECWA has committed to actively lead, support and monitor the progress that is made against each of the priorities over the next four years.

The Strategic Directions is the result of an extensive process of consultation between the CECWA and key stakeholders from across our Catholic education system in Western Australia. I would like to take this opportunity to thank the many students, parents, staff and religious who took part in the consultation, either online or in workshops. Your efforts to support the development of the Strategic Directions are greatly appreciated and have enabled a clear understanding to be formed by the CECWA on the areas that require our most pressing attention.

As Chair of the CECWA, I commend this Strategic Directions document and look forward to witnessing the positive impact it will have on our current and future students and staff in Catholic schools across our State.

Bishop Gerard J Holohan



Governance Structure

Bishops of Western Australia

Catholic Education Commission of Western Australia and Committees

163 Schools

CEWA Offices

CEWA Strategic Focus Areas

Catholic Identity

The Church's purpose for education is to advance the mission that is based on the Gospel of Jesus Christ.

Access and Diversity

We strive to provide access for children and young adults whose parents seek a Catholic education for them, especially the poor and marginalised.

Common Good and Stewardship

We make decisions responsibly and with discernment to serve and benefit the CEWA community as a whole, and to ensure the sustainability of our system of Catholic education.

Quality and Improvement

We strive to ensure Catholic education is committed to excellence, continual transformation and meeting all church and government requirements.

Leadership

We give witness to the Gospel through our faith, actions, relationships and professional excellence in education.

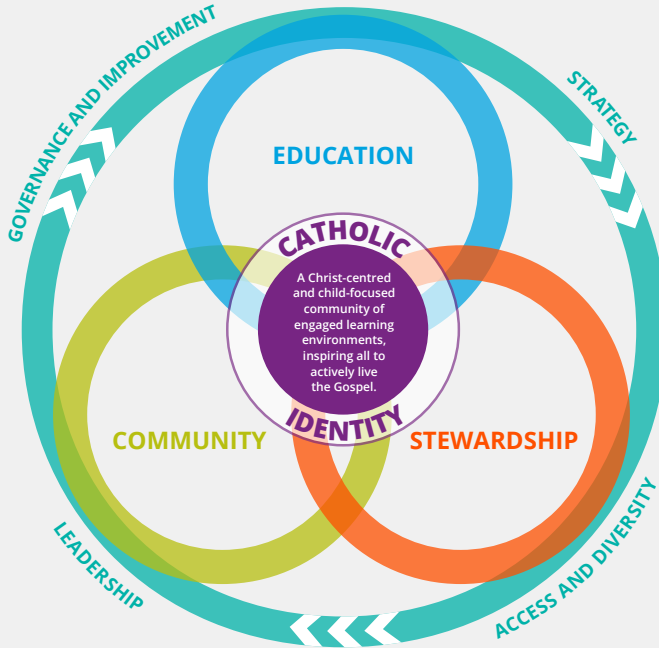
Strategy

We strive to be Christ-centred, child-focused and evidence-based in our strategic direction setting.



Quality Catholic Education

A conceptual framework for whole CEWA system improvement



Code of Ethical Conduct 'our way of being'

Christian Ethical Conduct requires a striving to develop and live out relationships in a manner that is based on Gospel values.

It calls upon all to act in a manner that is:

- Based on Christian ethics
- Professional
- Timely
- Contextually appropriate

A photograph of three children in school uniforms playing on a playground. The playground features several vertical wooden posts and horizontal wooden stumps. The ground is covered in wood chips. In the background, there is a blue canopy structure and a brick building. The text is overlaid on a purple rectangular background in the upper right quadrant.

Catholic Education Western
Australia is a Christ-centred
and child-focused community of
engaged learning environments,
inspiring all to actively live
the Gospel

CECWA Strategic Directions

*Responding to God's call to serve
our diverse communities*

CATHOLIC IDENTITY

1

Inspiring Christ-centred Leaders

- a Contemporary models of Gospel leadership that are inclusive, flexible and responsive to the increasing requirements of church, governments and society.
- b Shared leadership and governance practices that embrace Catholic Social Teaching principles emphasising common good, participation, subsidiarity and co-responsibility.
- c Inclusive leadership formation and development reflecting the commitment and diverse talents of staff, students, parents and community members.

EDUCATION

2

Catholic Schools of Excellence

- a Effective communities developing students as whole Christian persons.
- b Catholic schools witnessing effective, contemporary pedagogy and mission-inspired practice and outreach.
- c Shared understanding and commitment to a Catholic *Vision for Learning* across all schools.
- d Commitment to providing high quality Religious Education.



COMMUNITY

3

Catholic Pastoral Communities

- a Inclusive communities welcoming and supporting students with diverse learning and social needs.
- b Shared understanding and commitment to the *Transforming Lives: Strategy 2025*.
- c Open processes for conversation and engagement with all members of CEWA communities and their local church.
- d Services to enhance the safety and wellbeing of students and staff across all contexts.

STEWARDSHIP

4

Accessible, Affordable and Sustainable System of Schools

- a Initiatives ensuring the accessibility, affordability, sustainability and growth of schools.
- b Transparent and inclusive processes for distributing resources that build equity and co-responsibility across all schools.
- c Responsiveness to the diverse needs of students.



Guiding Principles

for CECWA Strategic Directions

Our school communities are central to the Church's mission of bringing the Good News of Jesus Christ to all.

At the heart of all of our decisions and actions is the dignity of each child.

Central to our identity as a Christ-centred community are our partnerships with families, parishes and schools.

We respect the uniqueness of each person and community ensuring that quality Catholic education is focused on engaged learning.

We commit to the principles of subsidiarity, co-responsibility and participation in enhancing Catholic education across Western Australia.

We seek to provide access to Catholic education, especially for the marginalised and disadvantaged.

